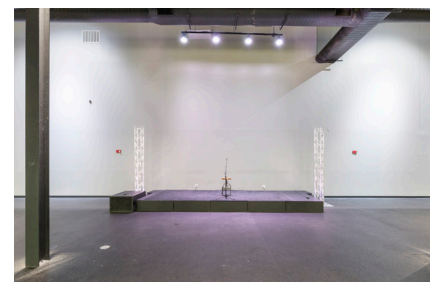
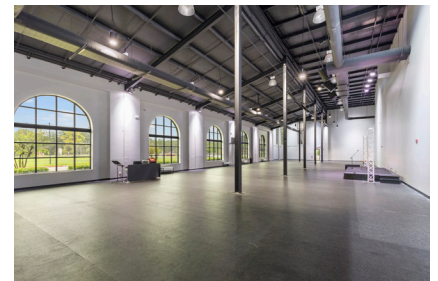
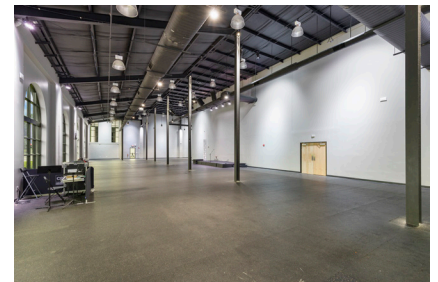
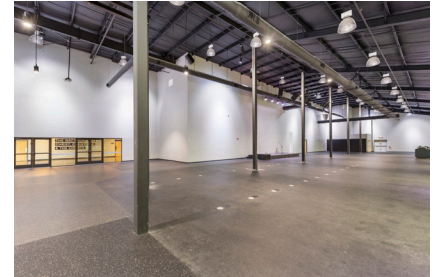
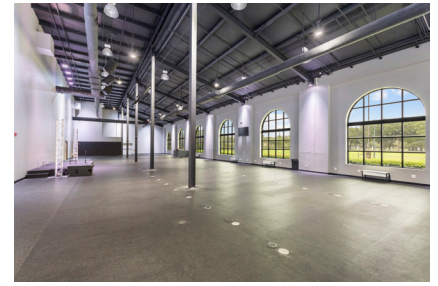


GREAT ROOM

SPECIFICATIONS & PHOTOS



DESCRIPTION:

Open, modern space with high ceilings ideal for large gatherings, conferences, weddings, concerts, and more.

CAPACITY: 200-640

- Theater seating: 640
- Banquet seating: 530
- Classroom seating: 270
- Crescent seating: 370

ACCESS & AMENITIES:

- Stage platform
- Easy access to foyer restrooms
- Large arched windows with natural lighting

TECHNICAL:

- Livestream and recording capability
- Built-in projection on two walls
- Confidence monitor
- Full stage and column lighting
- Includes dimmable lighting and house lights
- Full audio capability

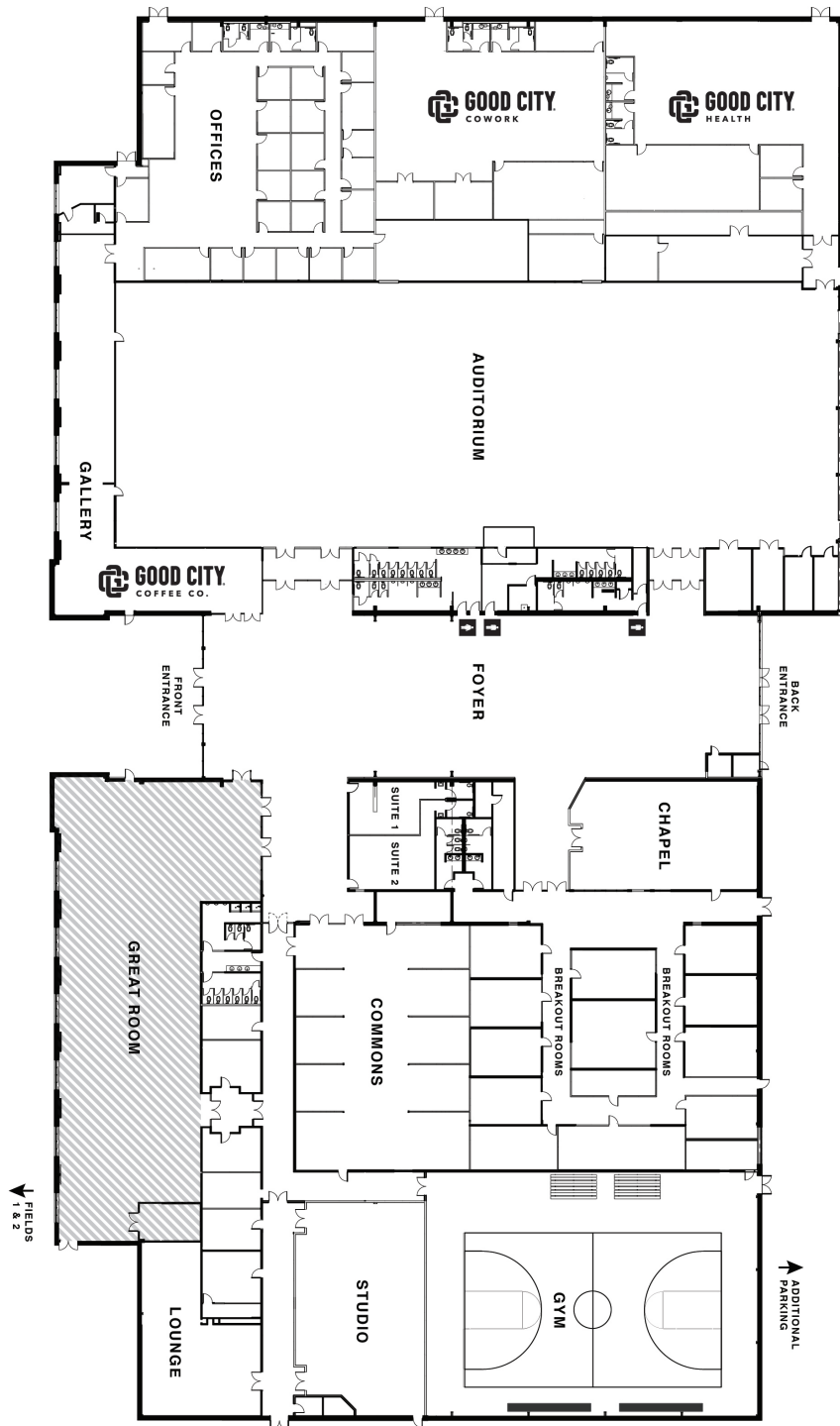


QUESTIONS? Email: info@602venue.com

602VENUE.COM // 602 Pruitt Rd, The Woodlands, TX 77380

GREAT ROOM

FLOOR PLAN



QUESTIONS? Email: info@602venue.com

602VENUE.COM // 602 Pruitt Rd, The Woodlands, TX 77380